

Ktsu

AMERICA

THE COMPETITIVE EDGE

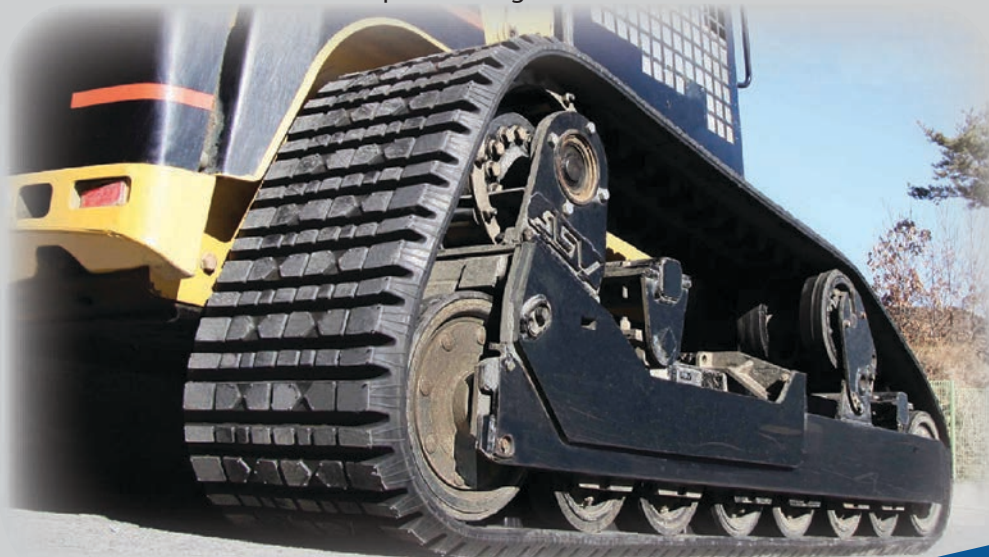


Ktsu America now offers the NMC (Non-Metal Core) rubber tracks for the construction market. We carry tracks for your ASV, Cat and Terex multi-terrain loaders. Our tracks are manufactured to provide you a longer track life - no matter the terrain. Engineered protection against drive lug failure and OEM demanded Anti-Vibration feature are just two of the advantages you will experience with the Ktsu NMC tracks.

A heavy-duty structure given to each of our NMC tracks greatly enhances the prevention of puncture. Our 85+ lug durometer hardness reading ensures a durable molded drive lug resistant to internal lug breaks. Utilization of a unique and advanced compounding between synthetic and natural rubber provides for the evolution of a track reduces untimely wear, vibration control and less operator fatigue. Integrity in design, superior process control and quality driven manufacturing promotes and supports a standard of performance that strives to exceed normal expectations. Guaranteed quality, guaranteed fitment, guaranteed performance. All together you get the best track on the market!

Reliable and Durable
NMC Warranty - pro-rated manufacturer warranty.

Ktsu Brand Rubber Track-Your Competitive Edge





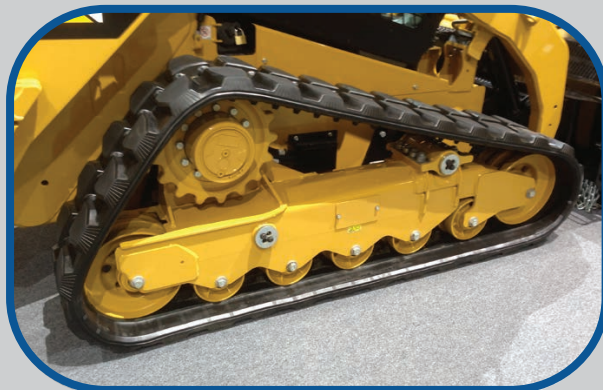
THE COMPETITIVE EDGE

Ktsu America offers metal core rubber tracks for the construction market. We carry a wide selection of tracks for your compact track loaders (CTL), excavators, and carrier dumpers.

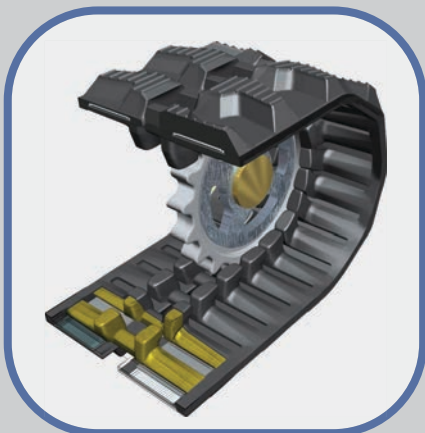


World-Class Research and Development that is supported by the highest standards of quality control provides you a track that will out-live and out-perform our competition.

Advanced rubber compounds and synthetic blends ensure appropriate rubber durability and abrasion resistance in the field. Internally, continuous steel cords with annular design prevent the transmission of stress. This important feature of Continuous Cording Process helps to guarantee uniform strength throughout the track and prevents separation, a common cause of premature track failure.



To prepare the track for the backside of its lifespan, steel cords and inserts are dipped to allow strong adhesive bonding while encasing the internal track with preventative corrosive coats. The factory does not produce generic guides nor molds; each track is designed specifically for the application and model intended.



Precision in manufacturing relieves track, machine and operator stress for long days on the job. By taking the vibration out of the undercarriage, the operator is less fatigued for longer and more meaningful performance.

Reliable and Durable
CTL Warranty - 14 months
Excavator Warranty - 18 months

Ktsu Brand Rubber Track - Your Competitive Edge